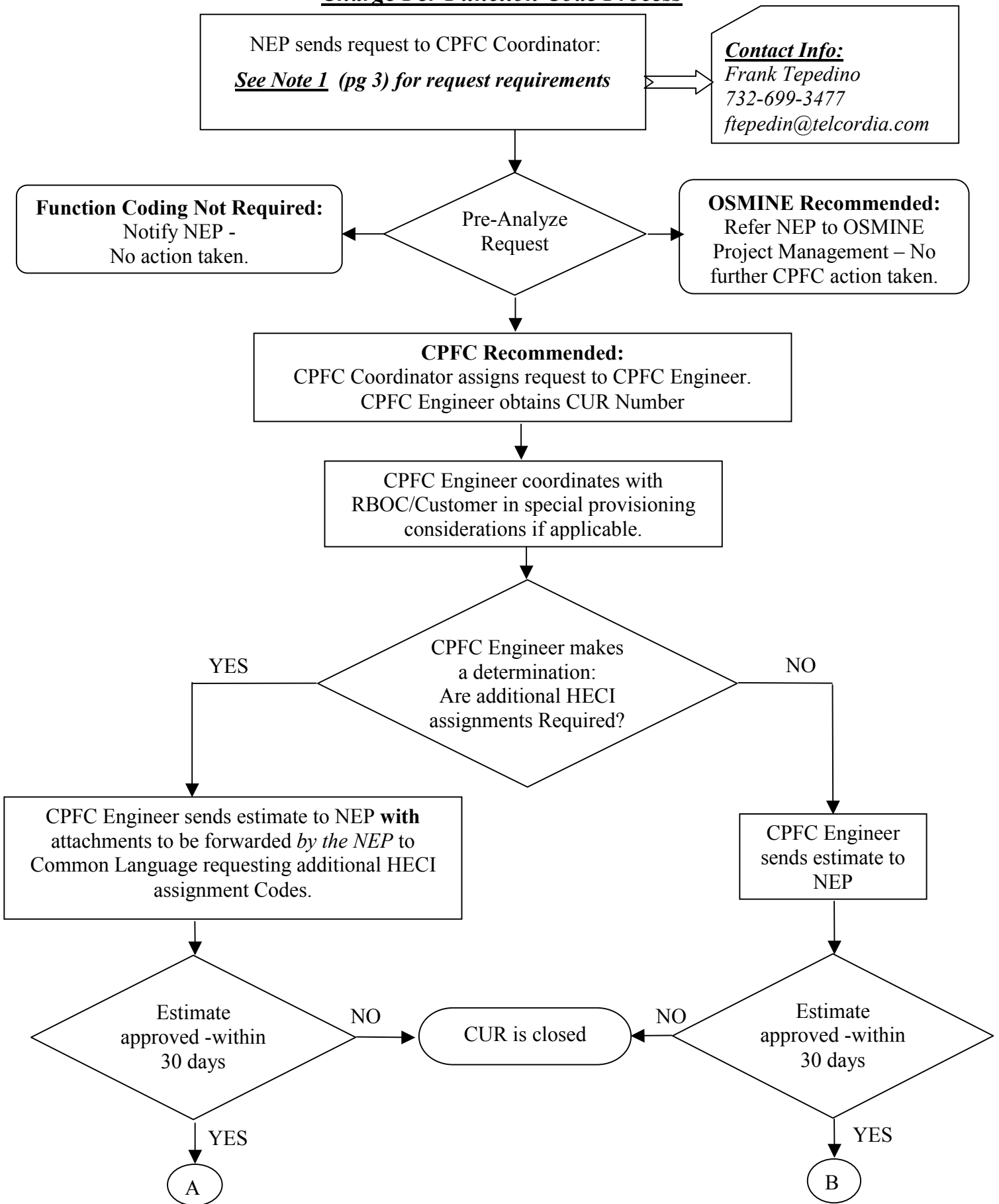


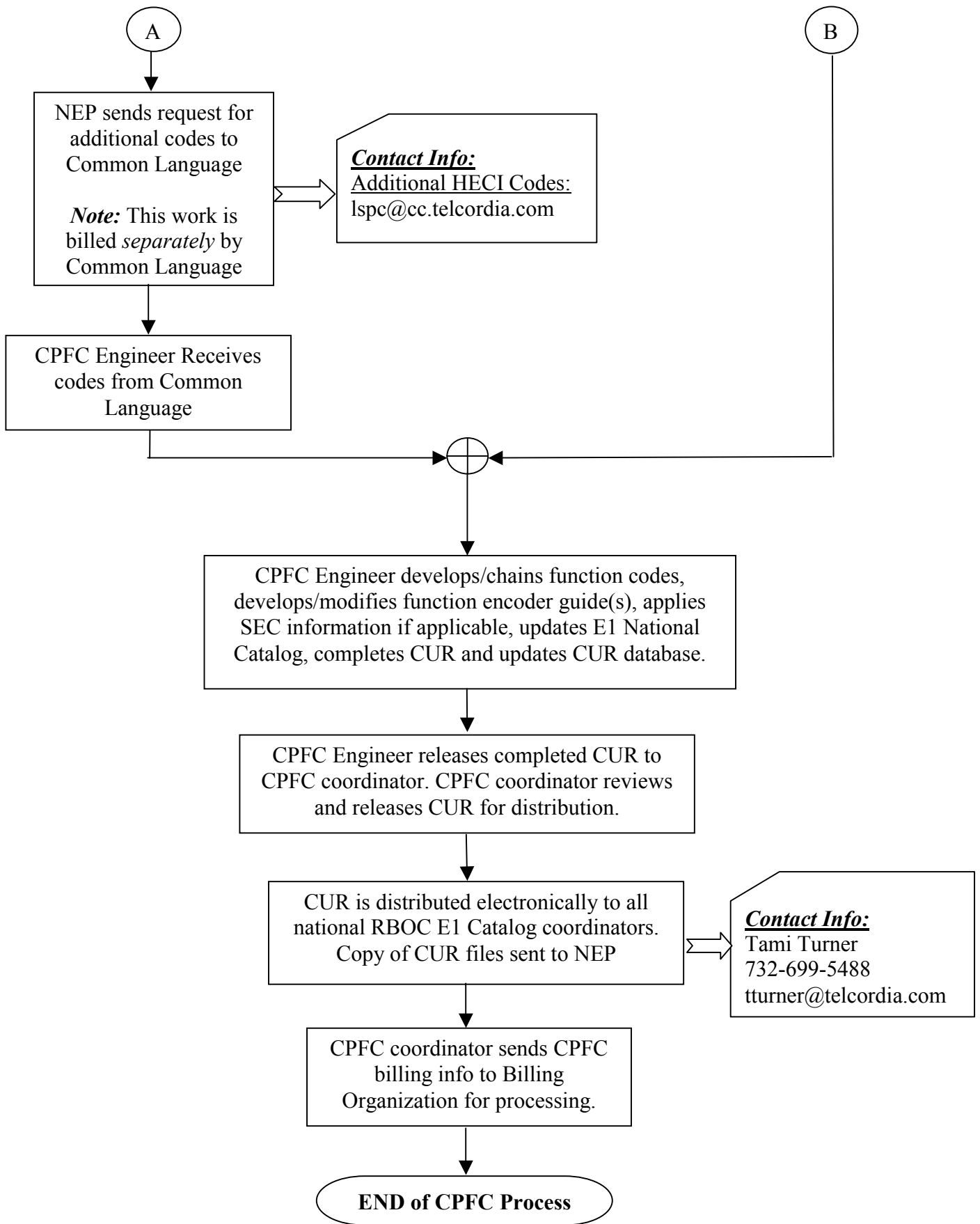


# **Charge Per Function Code Process**

Copyright © 2002, Telcordia Technologies, Inc. All rights reserved.  
No copies of this document or any part thereof can be made without  
the express written consent of Telcordia Technologies, Inc..

**Charge Per Function Code Process**





**Note 1 – Request requirements:**

- A letter/email/fax requesting function codes.
- Full NEP contact information.
- An RBOC contact or customer contact for coordination of provisioning issues.
- Common Language CLEI codes for the shelf and all plug-ins as required or applicable
- Documentation to support all equipment to be function coded. This Documentation **must** include:
  - Shelf and/or Shelf layout clearly illustrating available slots and slot names
  - Lead-set (termination) information for SEC codes as applicable
  - Revision information if new equipment is similar to equipment already coded.
  - Plug-in descriptions including *optioning information*

**Special Note:** NEP is responsible for obtaining BANK CODES up front as necessary. This information can be coordinated with the requesting RBOC/Customer and the BANK CODE contact in Common Language.

**Contact Info:**  
BANK CODES:  
Robert Washington  
732-699-7438  
rwashin3@telcordia.com

In special cases where additional “F1” Channel Unit Bank Codes are required (ascertained during the CPFC analyzation process), the Supplier will be instructed on how to obtain these codes from Common Language